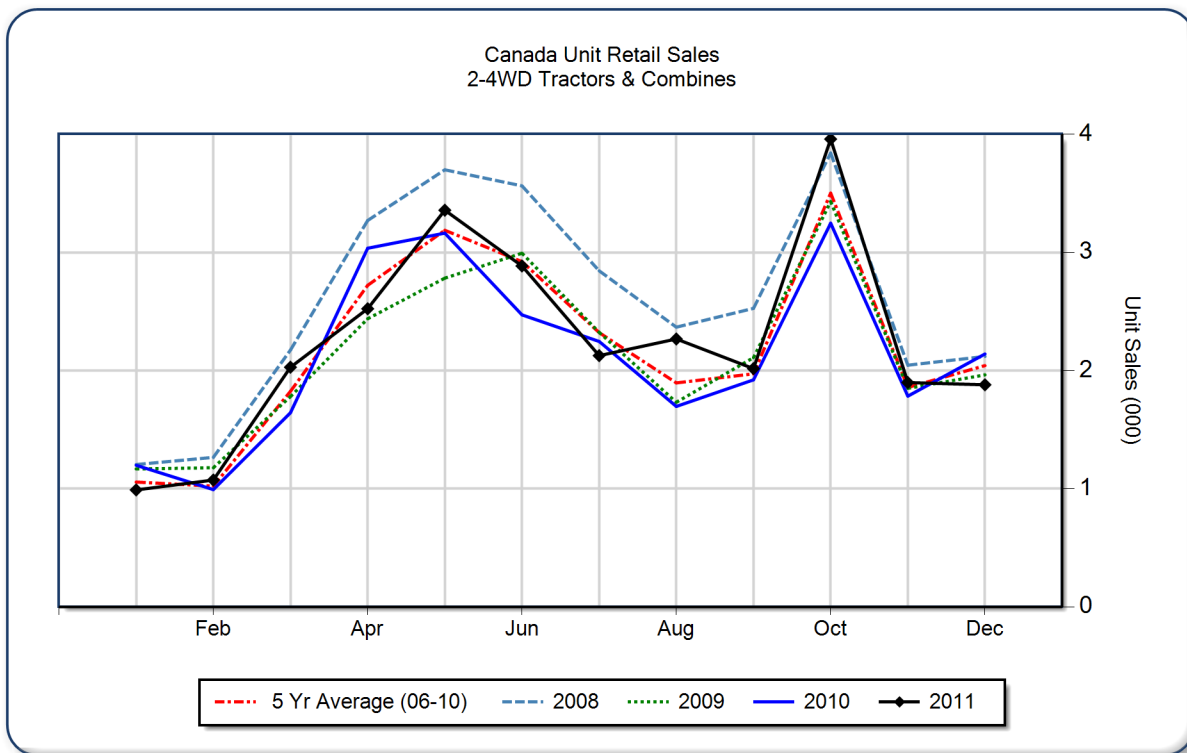


December 2011 Flash Report Canada Unit Retail Sales

Copyright, AEM. All rights reserved. If data is referenced, please acknowledge AEM as the source.

	December			YTD - December			Beginning Inventory Dec 2011
	2011	2010	%Chg	2011	2010	%Chg	
2WD Farm Tractors							
< 40 HP	701	801	-12.5	11,655	10,753	8.4	6,721
40 < 100 HP	505	570	-11.4	6,761	6,513	3.8	2,827
100+ HP	380	453	-16.1	4,321	4,226	2.2	1,453
Total 2WD Farm Tractors	1,586	1,824	-13.0	22,737	21,492	5.8	11,001
4WD Farm Tractors	129	125	3.2	1,364	1,342	1.6	305
Total Farm Tractors	1,715	1,949	-12.0	24,101	22,834	5.5	11,306
Self-Prop Combines	164	191	-14.1	2,899	2,701	7.3	376



These data are, in part, estimates that are subject to revisions when final detail data become available. Because of the seasonal nature of the industry, comparisons of monthly data from one period to another should be done with extreme caution. These data represent most, but not all, of the manufacturers in each product category being sold at retail in Canada.

Restricted Information from the Association of Equipment Manufacturers